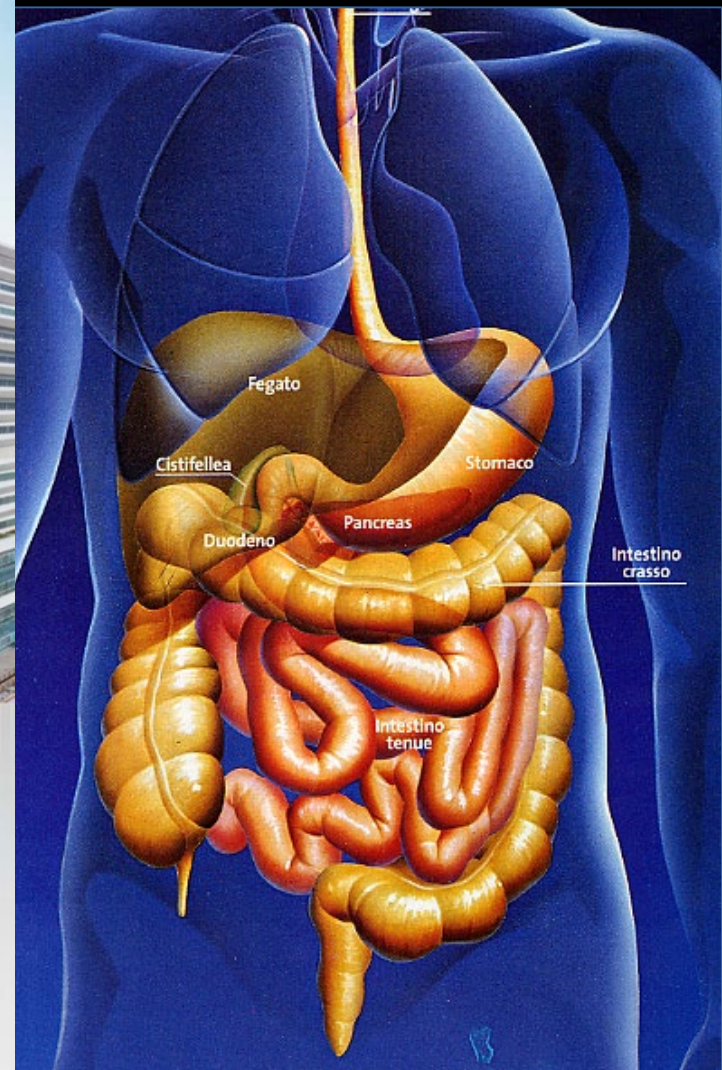




MILANO 4-5 OTTOBRE 2024

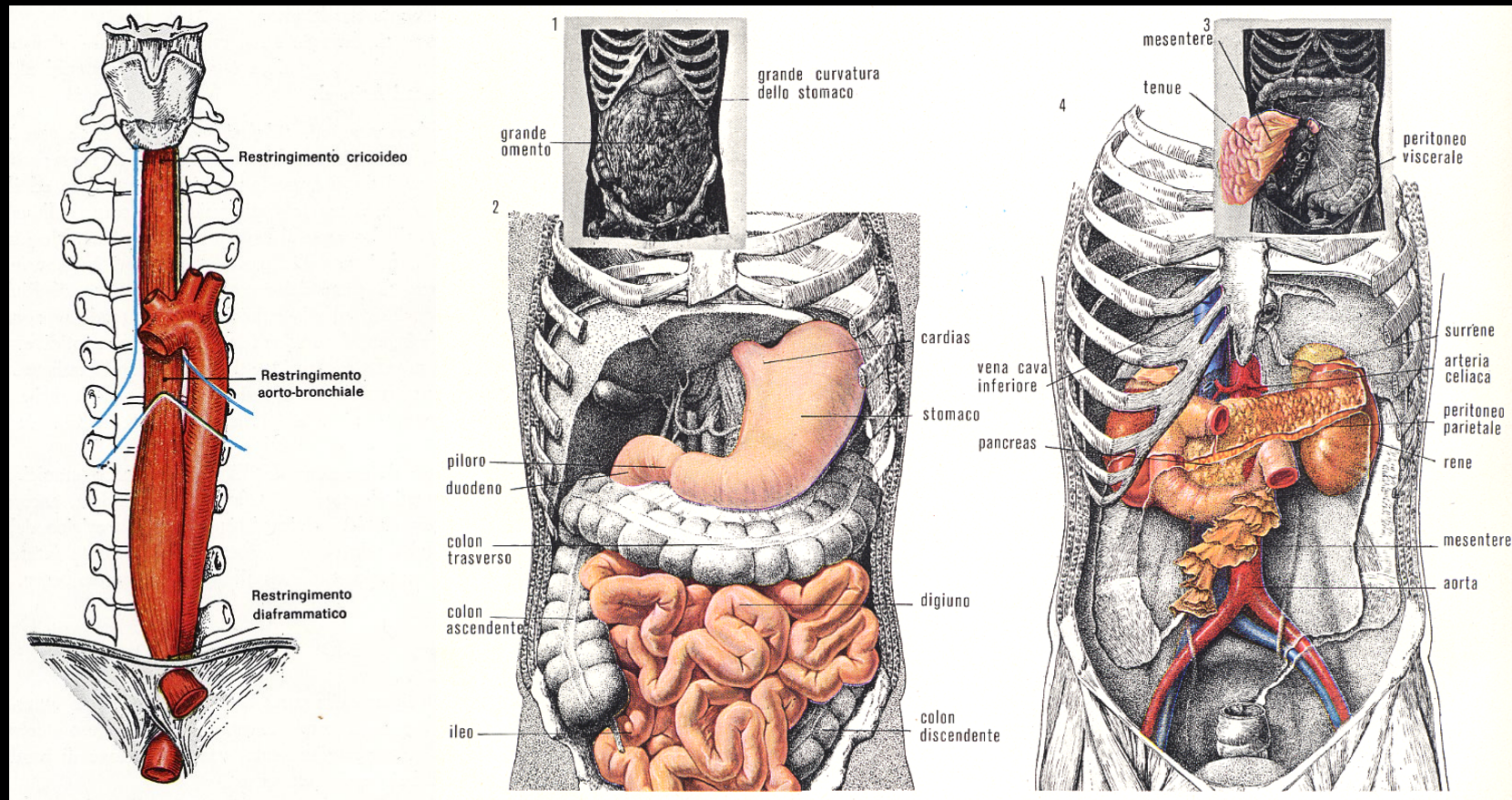
**CHIRURGIA BARIATRICA
PER IMMAGINI
UNA DIVERSA PROSPETTIVA**

PRESIDENTE ALESSANDRO GIOVANELLI



**DIAGNOSTICA RADIOLOGICA
IN PAZIENTI CANDIDATI
AD INTERVENTO PRIMARIO**

Rx esofago stomaco e duodeno a doppio contrasto



Esofago

Stomaco

Duodeno

Decreto Ministero della salute 18 ottobre 2012

tariffe nazionali massime di riferimento per la remunerazione delle prestazioni di assistenza ospedaliera per acuti ([allegato 1](#)), di assistenza ospedaliera di riabilitazione e di lungodegenza post acuzie ([allegato 2](#)) e di assistenza specialistica ambulatoriale ([allegato 3](#))

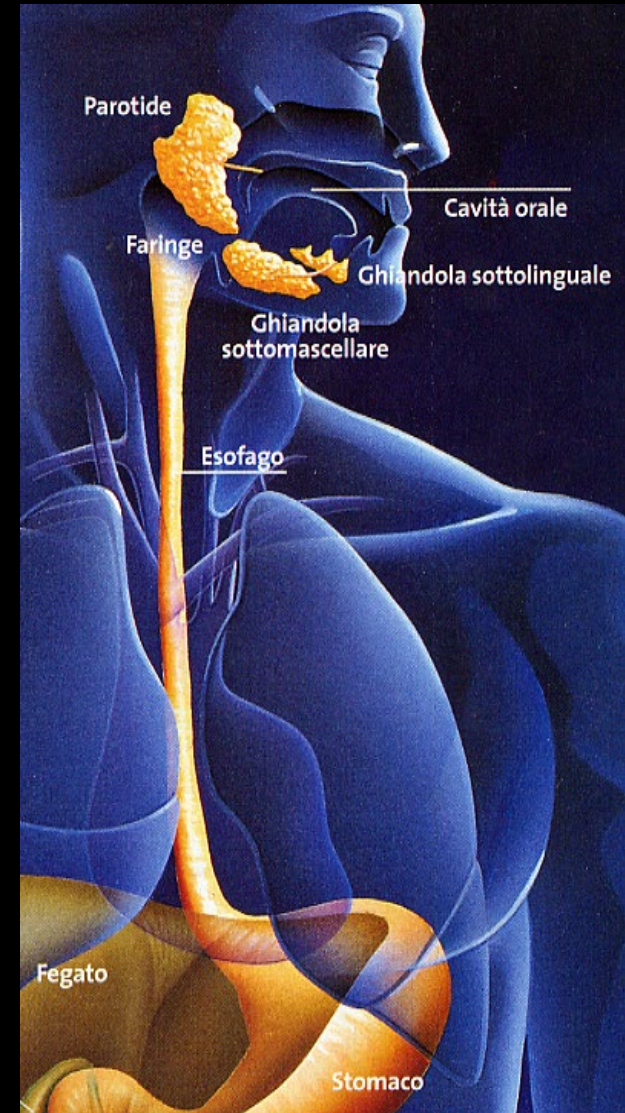
28-1-2013 Supplemento ordinario n. 8 alla GAZZETTA UFFICIALE Serie generale - n. 23

PRESTAZIONI di ASSISTENZA SPECIALISTICA AMBULATORIALE			TARIFFE
PROGR	CODIC	DESCRIZIONE	
393	87.16.2	TOMOGRRAFIA [STRATIGRAFIA] ARTICOLAZIONE TEMPOROMANDIBOLARE	53,20
394	87.16.3	TOMOGRRAFIA [STRATIGRAFIA] ARTICOLAZIONE TEMPOROMANDIBOLARE	26,86
395	87.16.4	TOMOGRRAFIA [STRATIGRAFIA] ARTICOLAZIONE TEMPOROMANDIBOLARE	44,42
396	87.17.1	RADIOGRAFIA DEL CRANIO E DEI SENI PARANASALI	22,21
397	87.17.2	RADIOGRAFIA DELLA SELLA TURCICA	15,24
398	87.17.3	CONTROLLO RADIOLOGICO DI DERIVAZIONI LIQUORALI	17,30
399	87.22	RADIOGRAFIA DELLA COLONNA CERVICALE	18,08
400	87.23	RADIOGRAFIA DELLA COLONNA TORACICA (DORSALE)	17,30
401	87.24	RADIOGRAFIA DELLA COLONNA LOMBOSACRALE	17,30
402	87.29	RADIOGRAFIA COMPLETA DELLA COLONNA	34,60
403	87.35	GALATTOGRAFIA	68,17
404	87.37.1	MAMMOGRAFIA BILATERALE	34,86
405	87.37.2	MAMMOGRAFIA MONOLATERALE	22,98
406	87.37.3	PNEUMOCISTIGRAFIA MAMMARIA	32,02
407	87.38	FISTOLOGRAFIA DELLA PARETE TORACICA	54,23
408	87.41	TOMOGRRAFIA COMPUTERIZZATA (TC) DEL TORACE	77,67
409	87.41.1	TOMOGRRAFIA COMPUTERIZZATA (TC) DEL TORACE, SENZA E CON CONTRASTO	124,11
410	87.42.1	TOMOGRRAFIA [STRATIGRAFIA] TORACICA BILATERALE	49,06
411	87.42.2	TOMOGRRAFIA [STRATIGRAFIA] TORACICA MONOLATERALE	34,60
412	87.42.3	TOMOGRRAFIA [STRATIGRAFIA] DEL MEDIASTINO	40,03
413	87.43.1	RADIOGRAFIA DI COSTE, STERNO E CLAVICOLA	24,27
414	87.43.2	ALTRA RADIOGRAFIA DI COSTE, STERNO E CLAVICOLA	16,01
415	87.44.1	RADIOGRAFIA DEL TORACE DI ROUTINE, NAS	15,49
416	87.44.2	TELECUORE CON ESOFAGO BARITATO	31,50
417	87.49.1	RADIOGRAFIA DELLA TRACHEA	14,98
418	87.52	COLANGIOGRAFIA INTRAVENOSA	68,69
419	87.54.1	COLANGIOGRAFIA TRANS-KEHR	44,42
420	87.59.1	COLECISTOGRAFIA	50,10
421	87.61	RADIOGRAFIA COMPLETA DEL TUBO DIGERENTE	70,50
422	87.62	RADIOGRAFIA DEL TRATTO GASTROINTESTINALE SUPERIORE	50,10
423	87.62.1	RADIOGRAFIA DELL'ESOFAGO CON CONTRASTO	37,44
424	87.62.2	RADIOGRAFIA DELL'ESOFAGO CON DOPPIO CONTRASTO	47,26
425	87.62.3	RADIOGRAFIA DELLO STOMACO E DEL DUODENO CON DOPPIO CONTRASTO	59,39
426	87.63	STUDIO SERIATO DELL' INTESTINO TENUE	45,45
427	87.64	RADIOGRAFIA DEL TRATTO GASTROINTESTINALE INFERIORE	29,95
428	87.65.1	CLISMA OPACO SEMPLICE	51,65
429	87.65.2	CLISMA CON DOPPIO CONTRASTO	91,67
430	87.65.3	CLISMA DEL TENUE CON DOPPIO CONTRASTO	140,99
431	87.66	RADIOGRAFIA DEL PANCREAS CON CONTRASTO	59,65
432	87.69.1	ALTRE PROCEDURE DIAGNOSTICHE SULL' APPARATO DIGERENTE	63,27
433	87.71	TOMOGRRAFIA COMPUTERIZZATA (TC) DEI RENI	85,50
434	87.71.1	TOMOGRRAFIA COMPUTERIZZATA (TC) DEI RENI, SENZA E CON CONTRASTO	134,37
435	87.72	TOMOGRRAFIA [STRATIGRAFIA] RENALE	27,90
436	87.73	UROGRAFIA ENDOVENOSA	89,35
437	87.74.1	PIELOGRAFIA RETROGRADA MONOLATERALE	68,69
438	87.74.2	PIELOGRAFIA RETROGRADA BILATERALE	91,93
439	87.75.1	PIELOGRAFIA TRANSPIELOSTOMICA	43,38
440	87.76	CISTOURETROGRAFIA RETROGRADA	66,11
441	87.76.1	CISTOURETROGRAFIA MINZIONALE	53,71
442	87.77	CISTOGRAFIA	48,29
443	87.77.1	CISTOGRAFIA CON DOPPIO CONTRASTO	68,69
444	87.79	RADIOGRAFIA DELL' APPARATO URINARIO	19,37
445	87.79.1	URETROGRAFIA	43,90
446	87.83	ISTEROSALPINGOGRAFIA	108,46
447	87.89.1	COLPOGRAFIA	55,78
448	87.99.1	CAVERNOSOGRAFIA SEMPLICE	72,30
449	87.99.2	CAVERNOSOGRAFIA DINAMICA	73,85

- 87.62.2
- 87.62.3



Cavo orale ed esofago

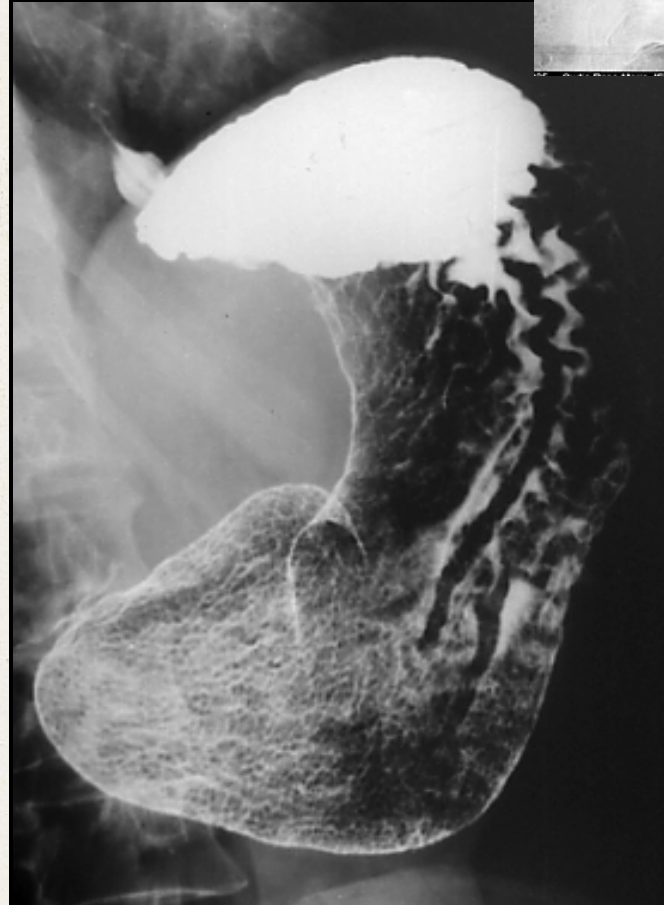
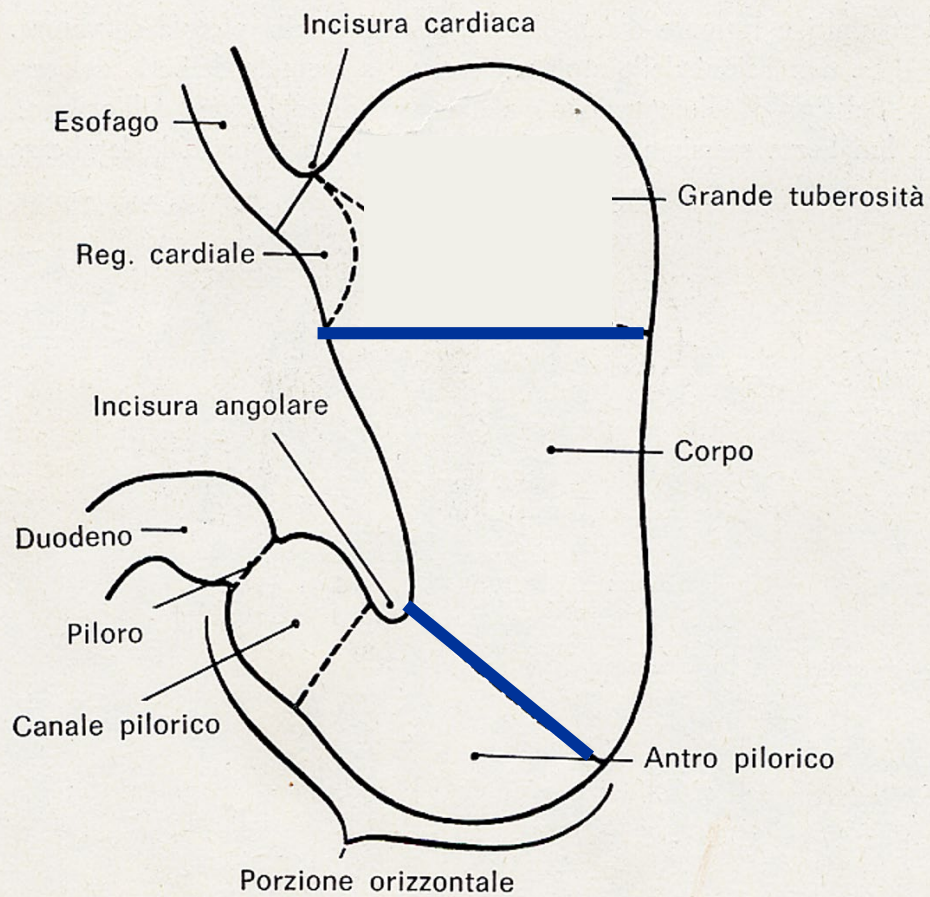


Cardias

studio in OAS ed OAD



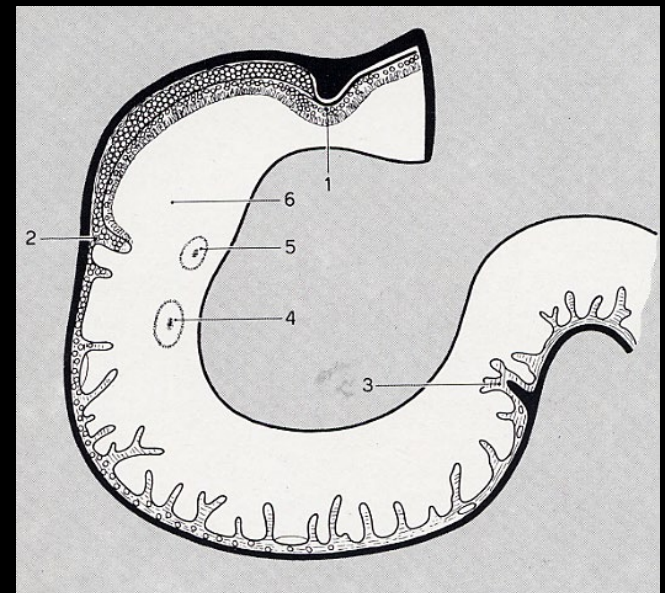
Stomaco



Ansa duodenale

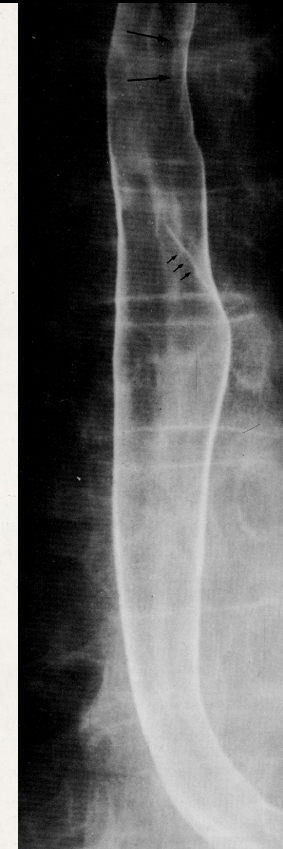
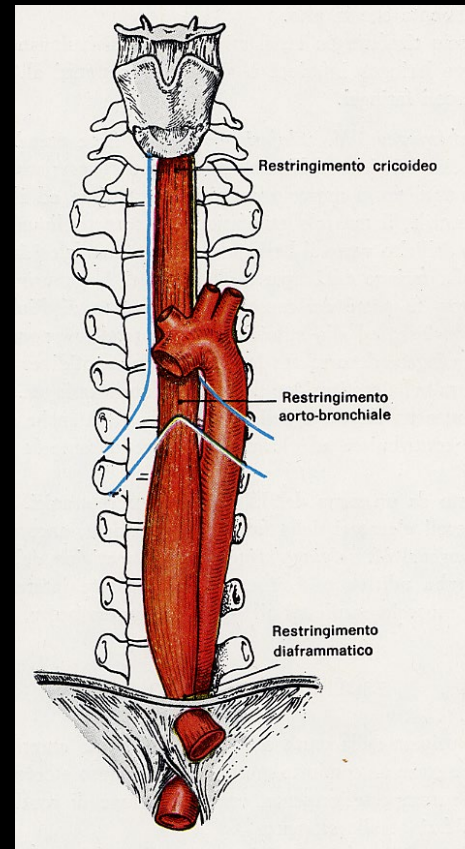


- **Sfinteri funzionali**
 - apico-bulbare
 - di Treitz



Esofago - segmenti

- **Esofago cervicale**
- **Esofago toracico:**
 - sovra aortico
 - retro aortico
 - inter aortico bronchiale
 - retro bronchiale
 - inter bronchiale
 - retro cardiaco
 - diaframmatico
- **Esofago addominale**



Esofago

A-P



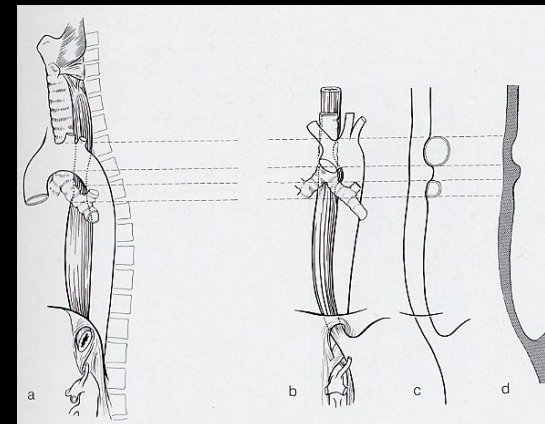
- Linea para-esofagea
- Linea para-vertebrale
- Linea para-aortica

Esofago

A-P

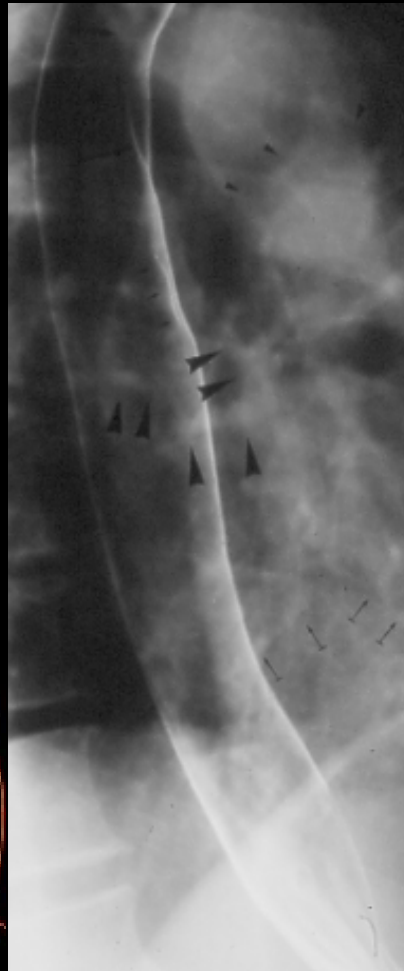
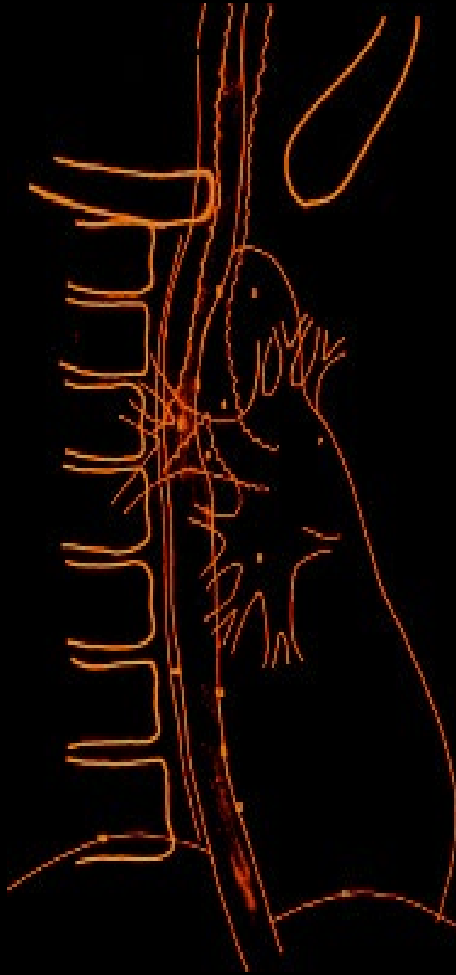


- Arco aortico
- Bronco lobare sinistro
- "Z" line



Esofago

OAD



- Aorta
- Bronco lobare
- Arterie e vene polmonari
- Arteria polmonare sinistra

Esofago

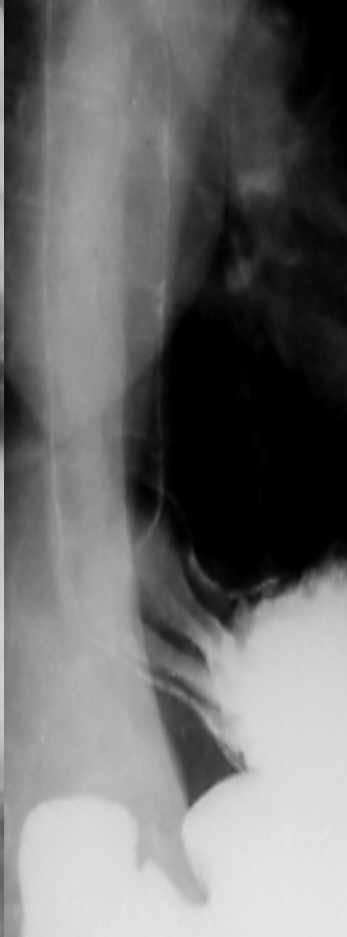
OAS



- Arco aortico
- Aorta discendente
- Bronco di destra
- Vene ed arterie polmonari

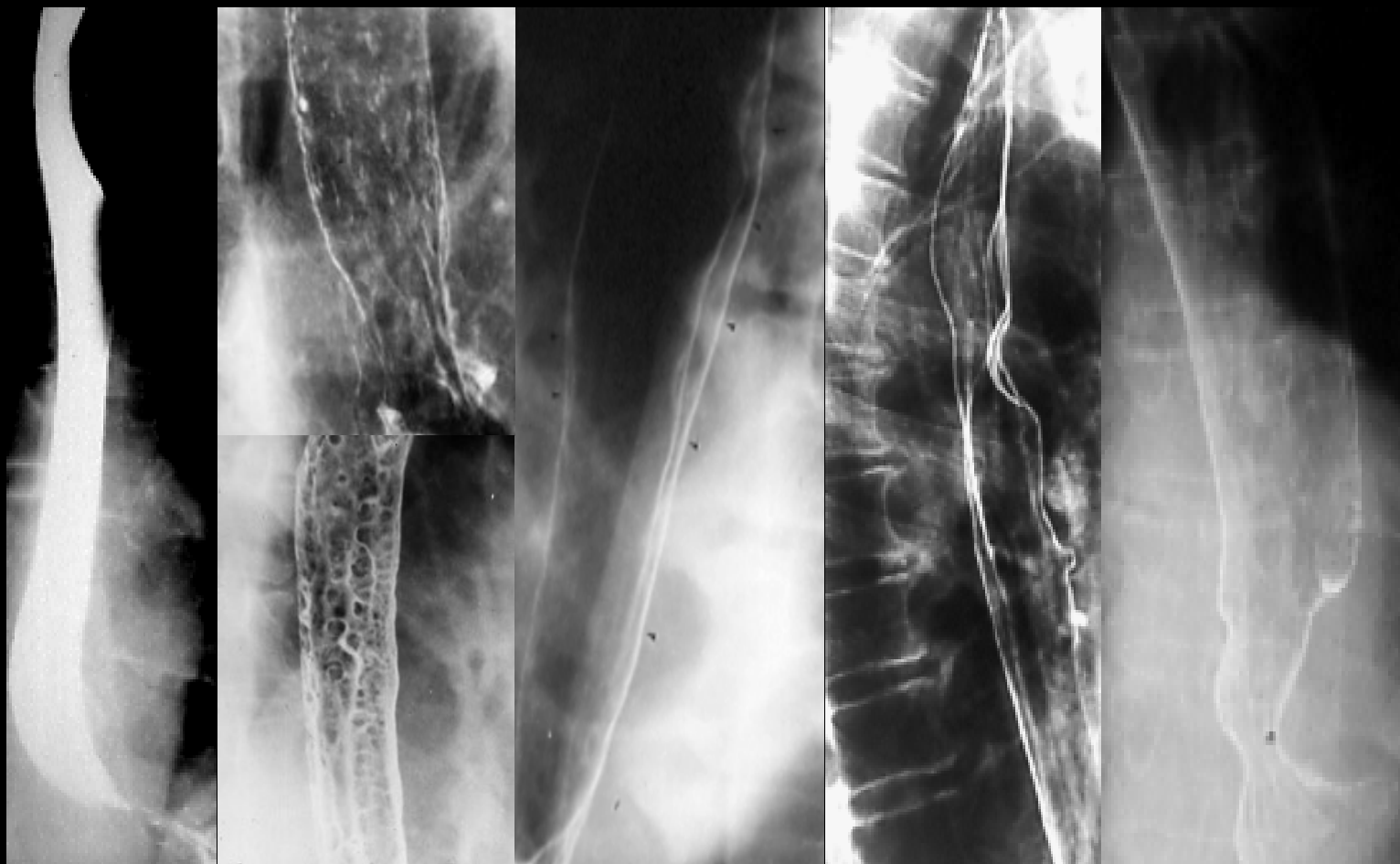
Esofago

pliche esofagee



Esofago

pareti ed impronte esofagee



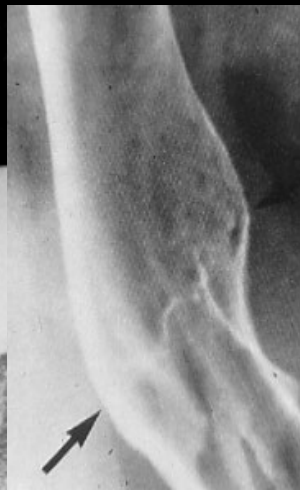
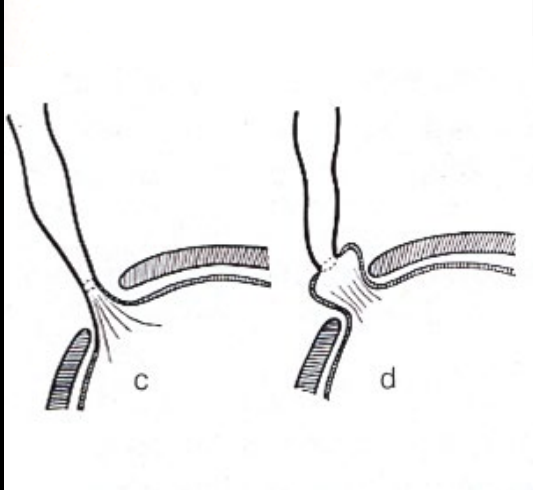
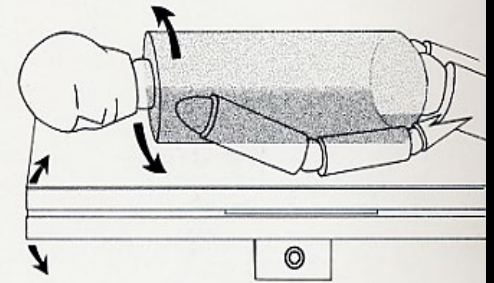
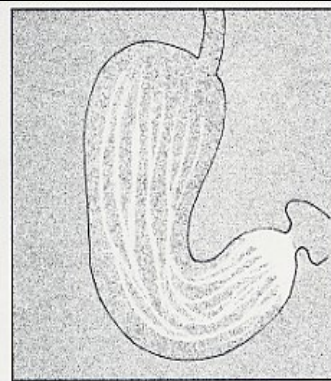
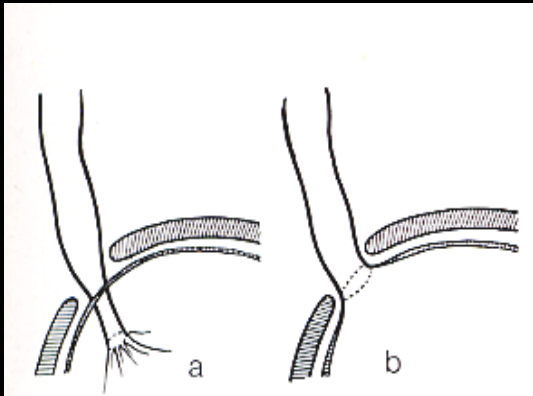
Esofago

funzionalità



Cardias

studio in OPS



Cardias

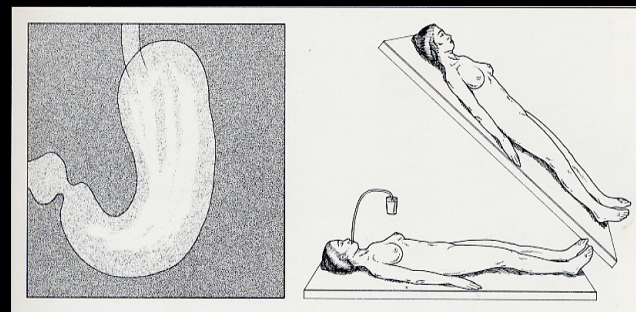
OAD ortostasi

- **Studio del cardias**

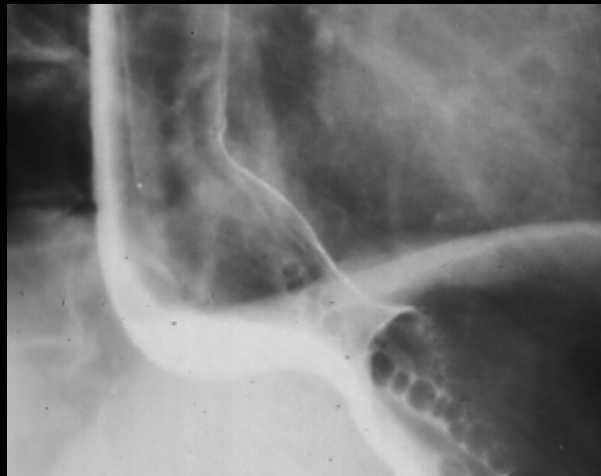
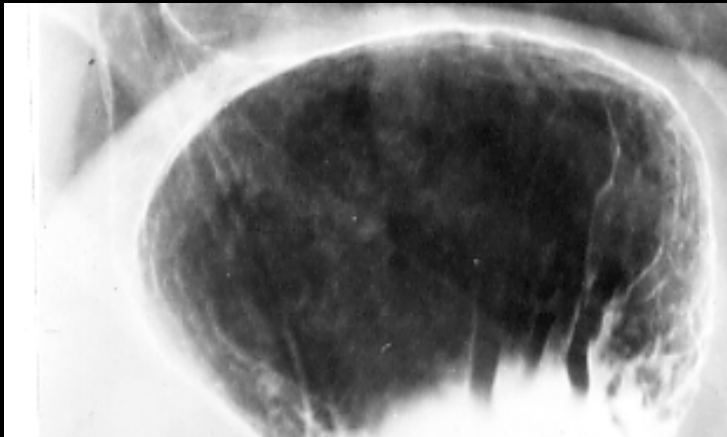
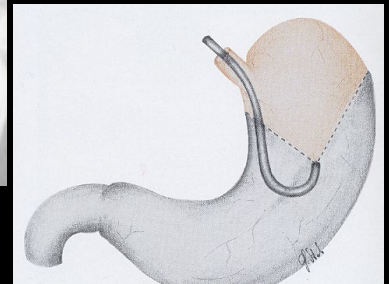
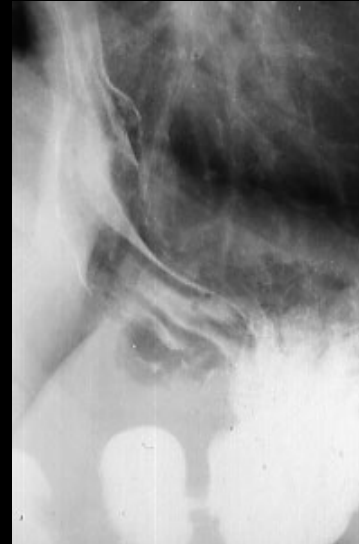
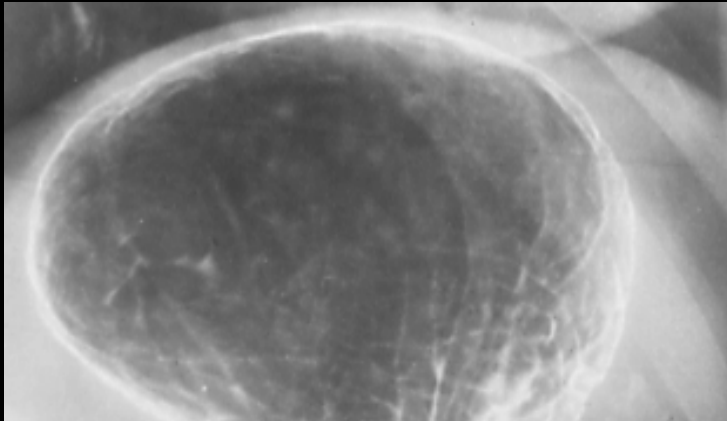


Cardias

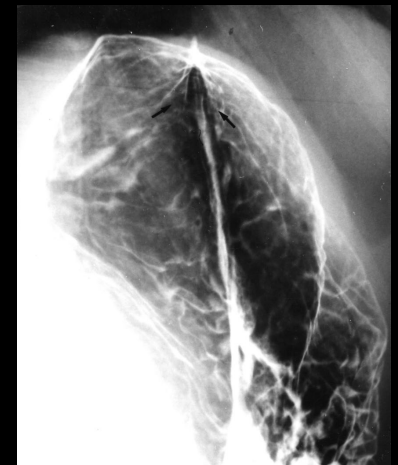
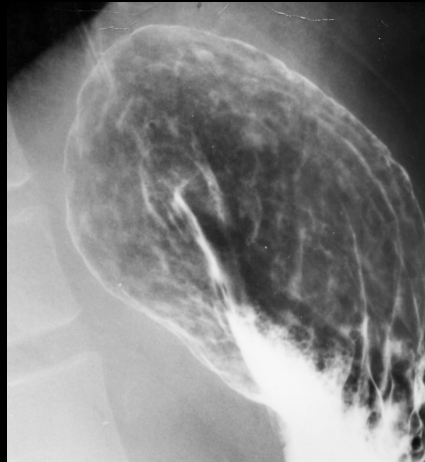
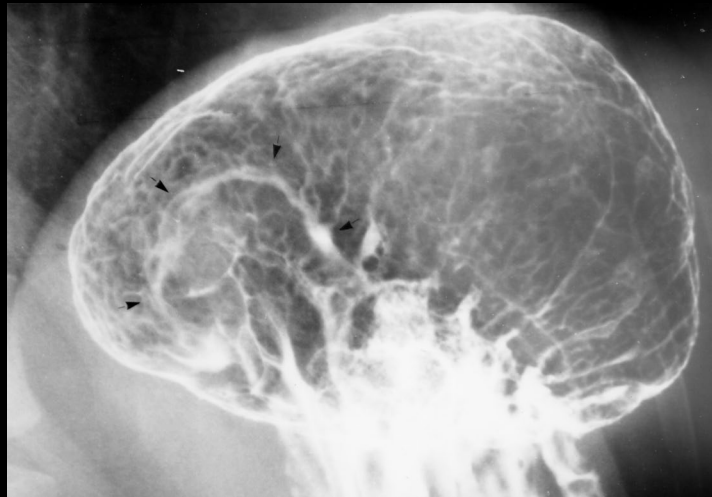
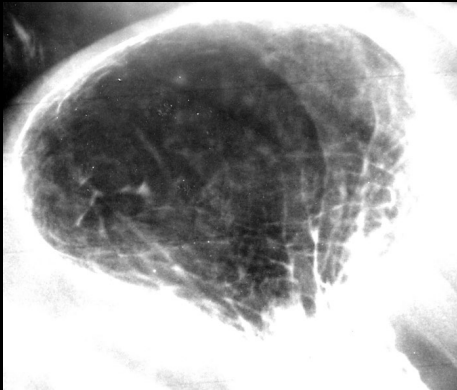
studio in OAS ed OAD



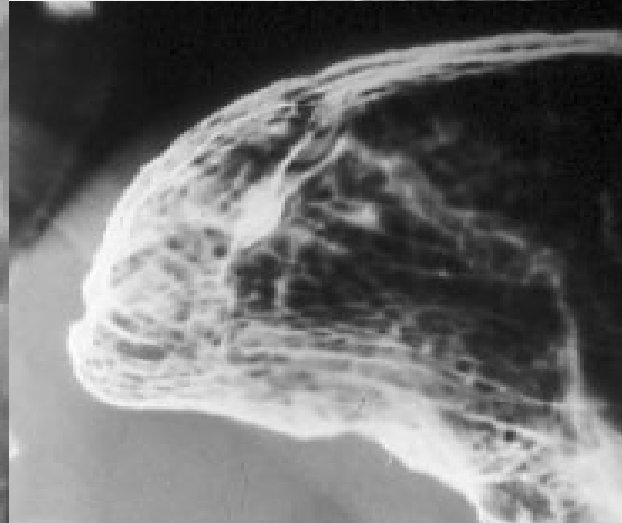
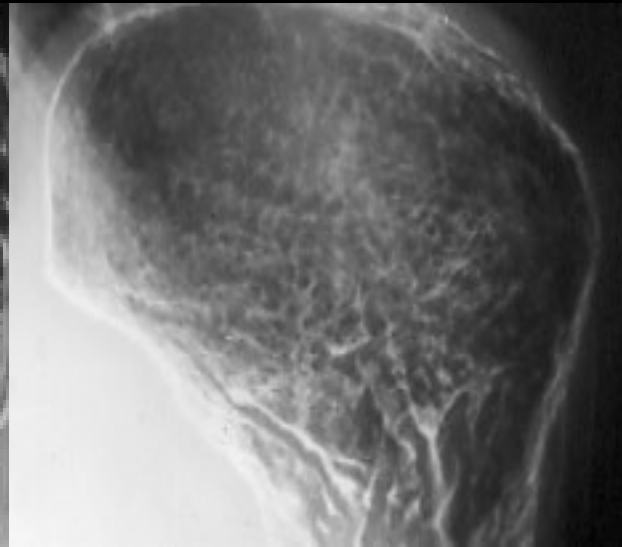
Cardias



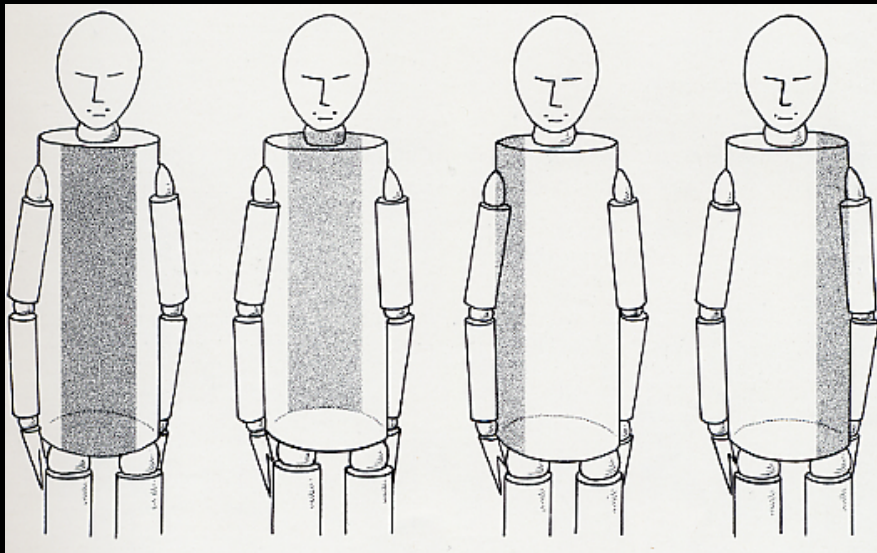
Cardias



Stomaco

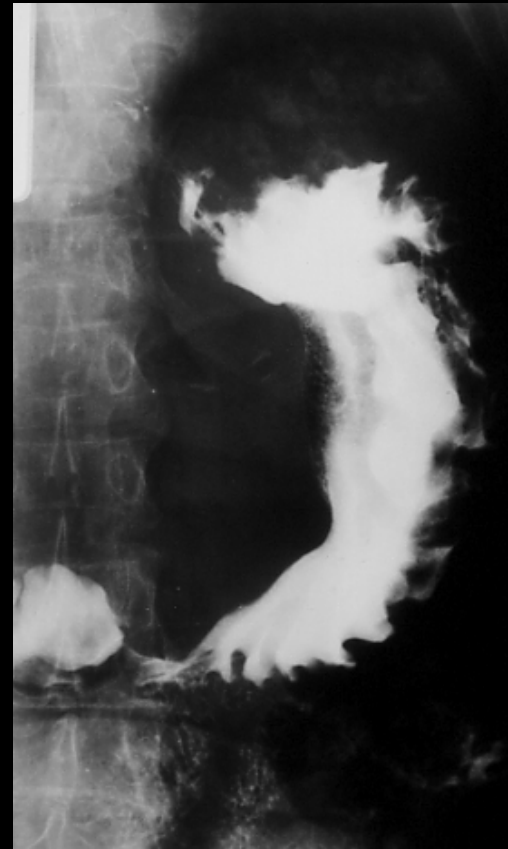
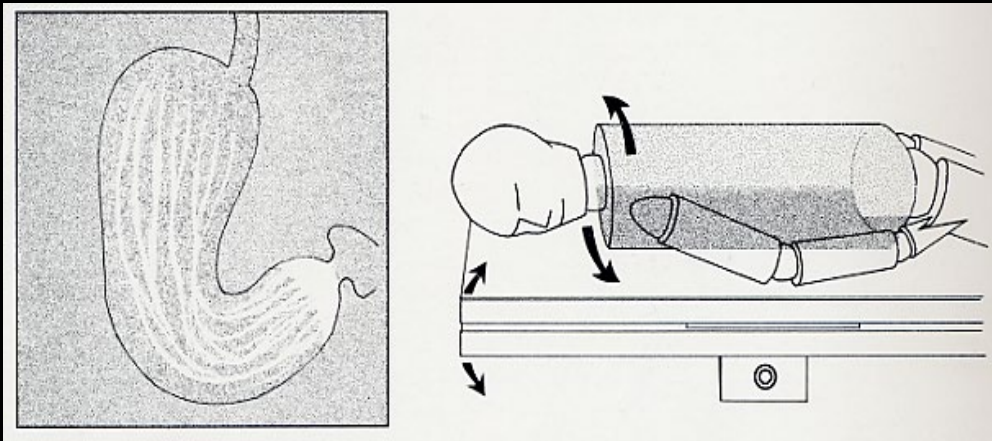


Stomaco



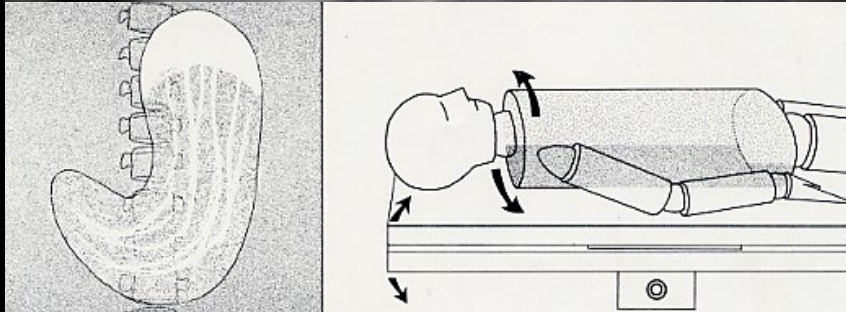
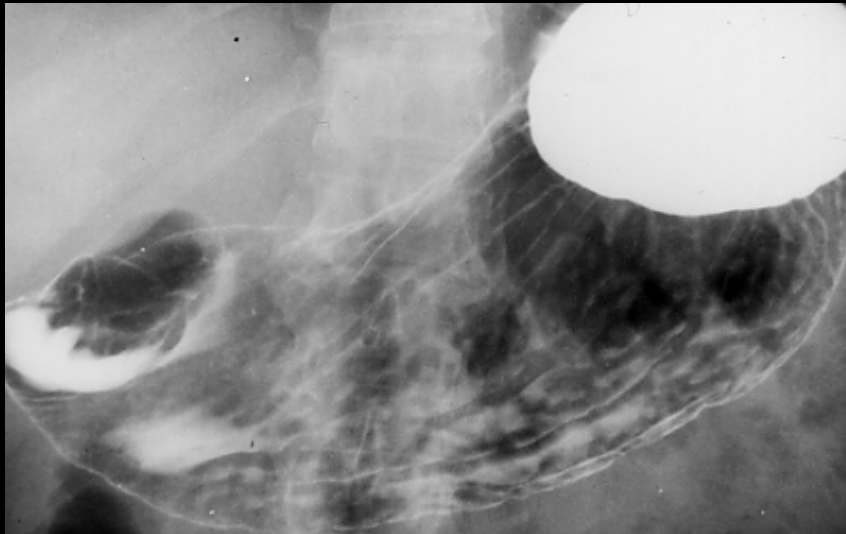
Stomaco

- Parete anteriore



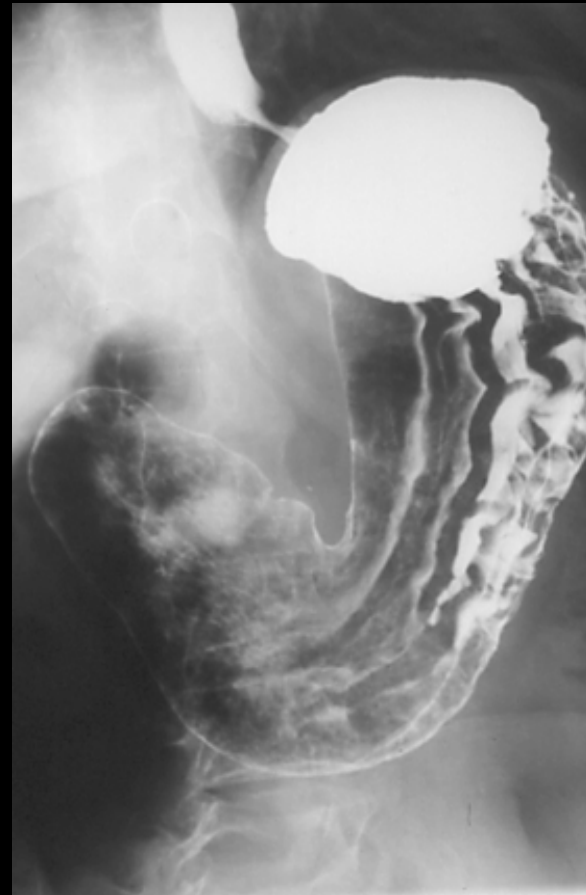
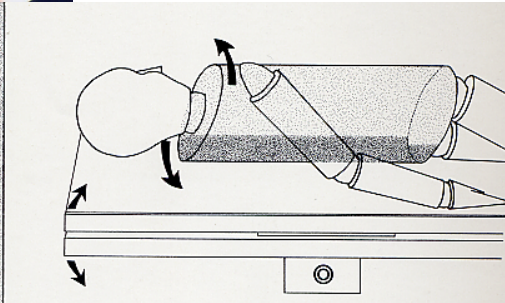
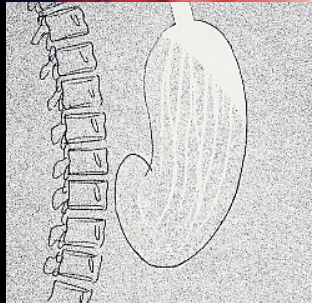
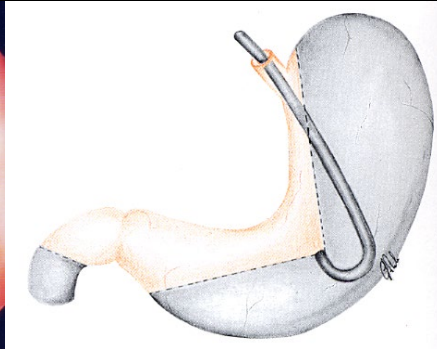
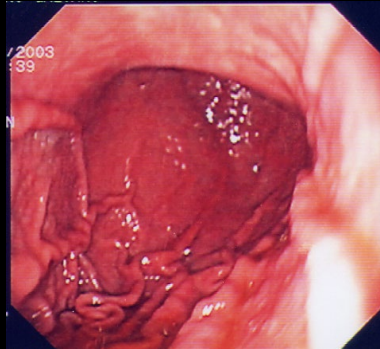
Stomaco

- Parete posteriore



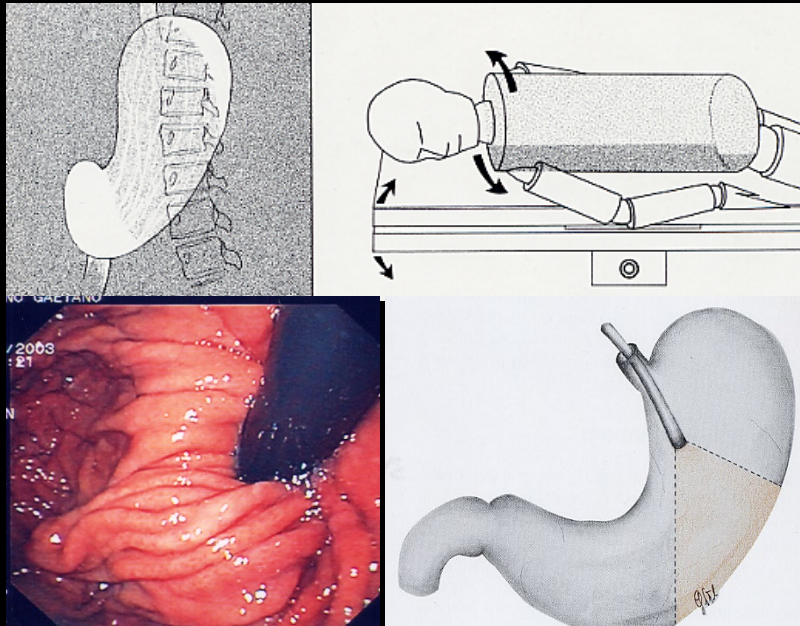
Stomaco

- Piccola curvatura



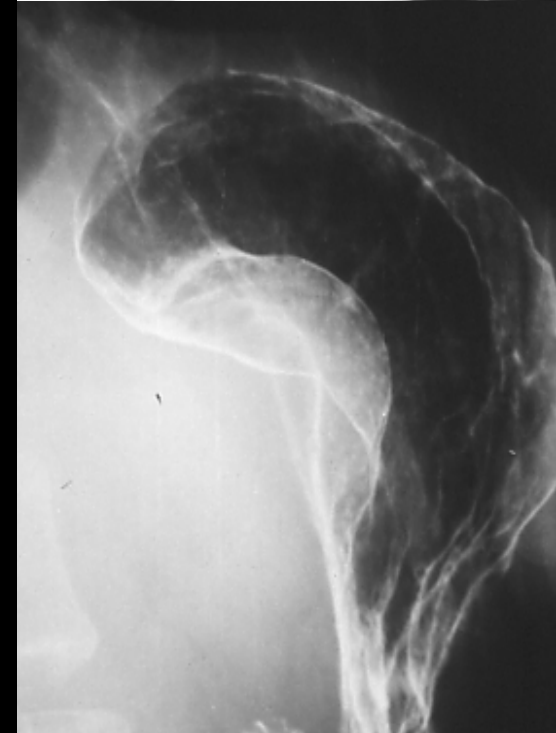
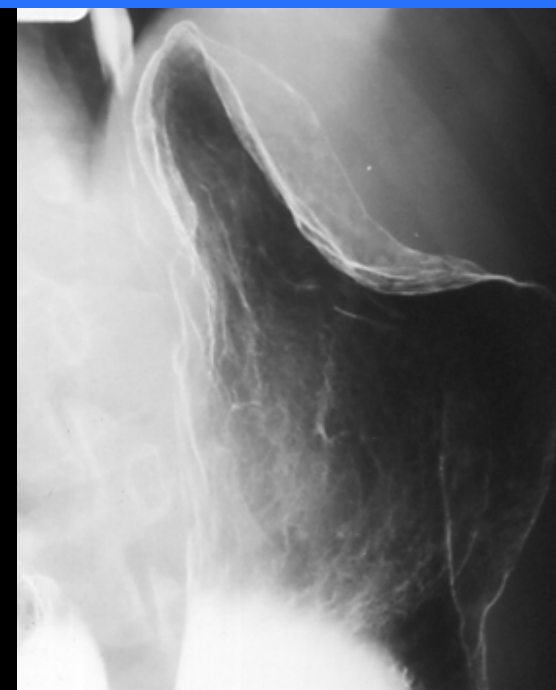
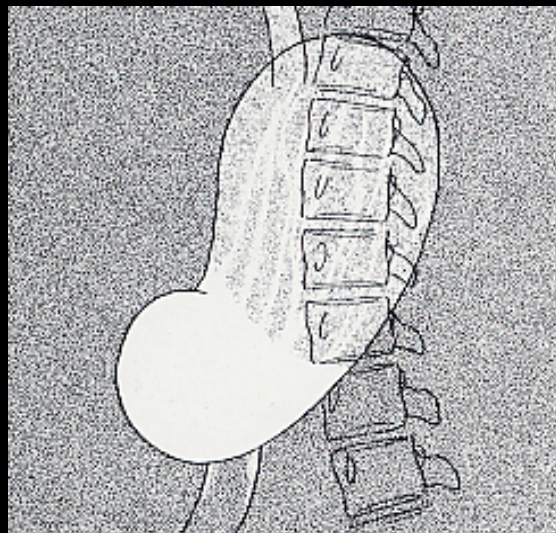
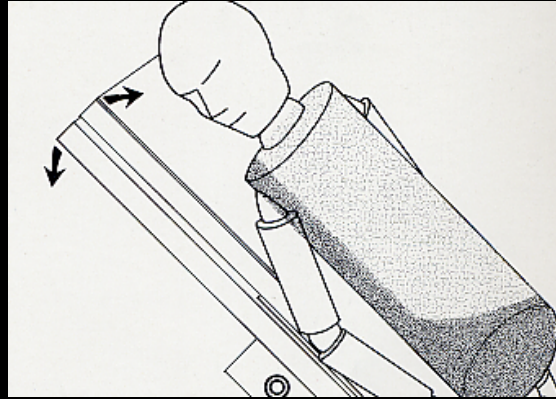
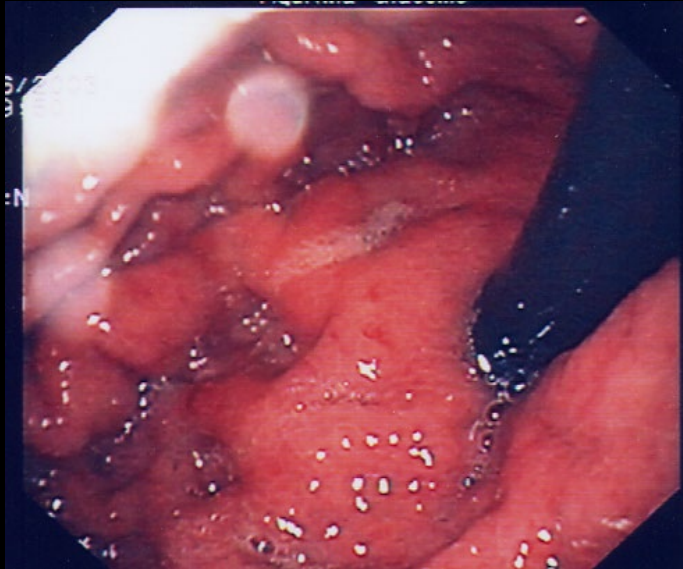
Stomaco

- Grande curvatura



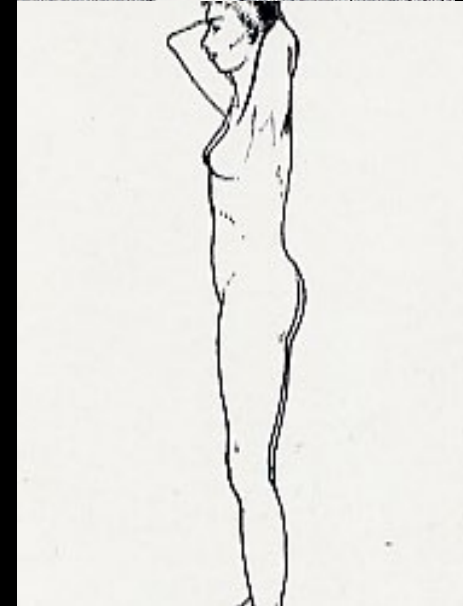
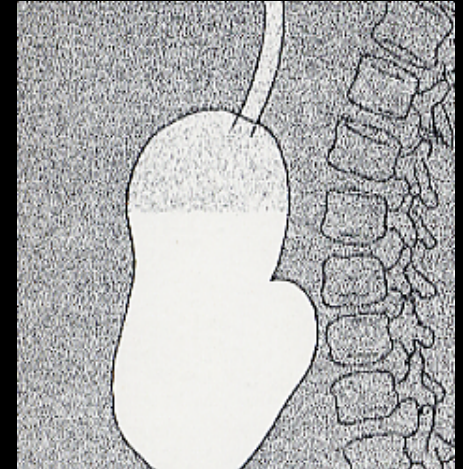
Stomaco

- Fondo gastrico

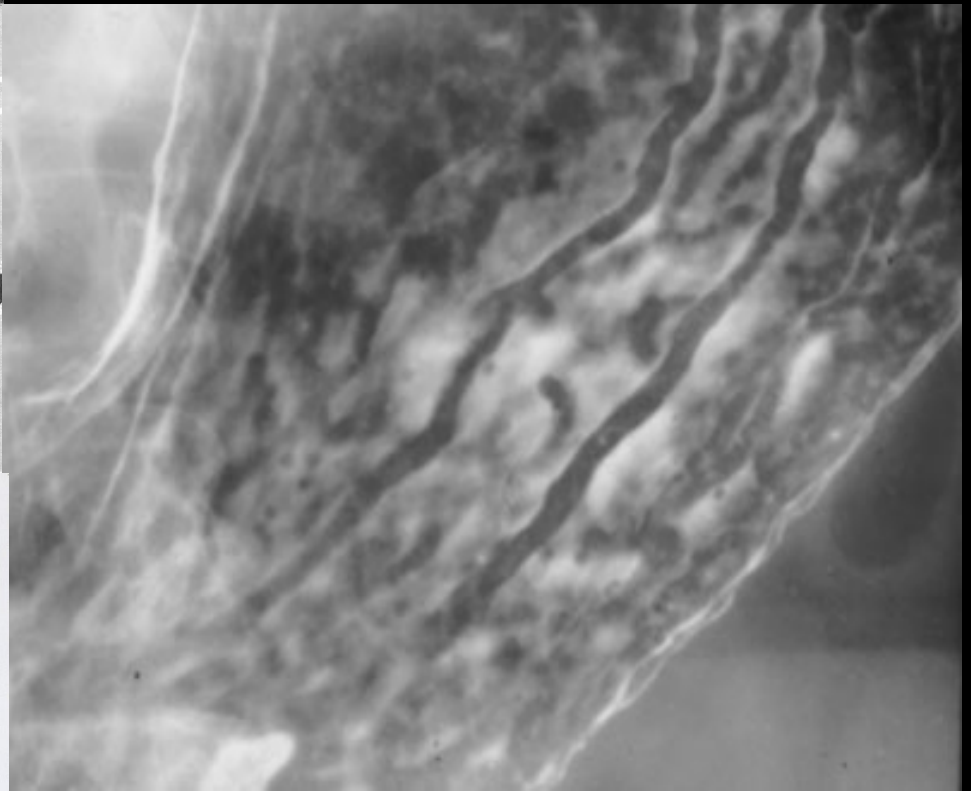
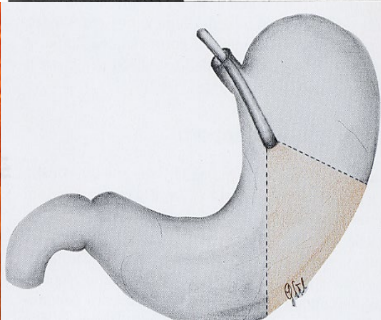
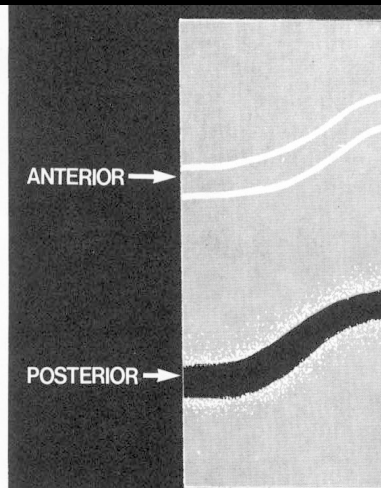
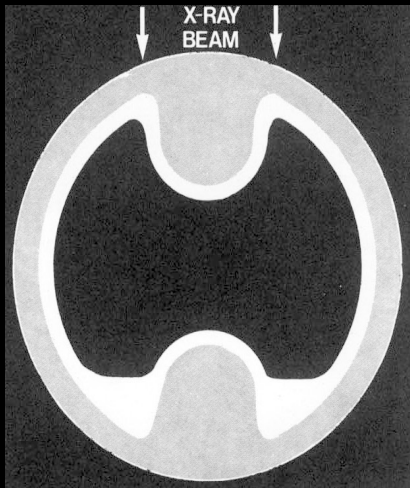


Stomaco

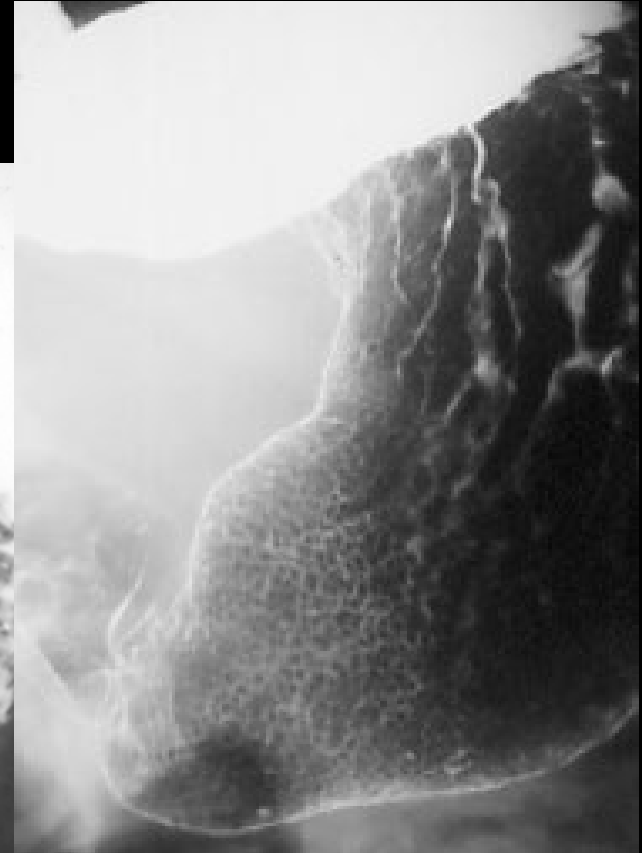
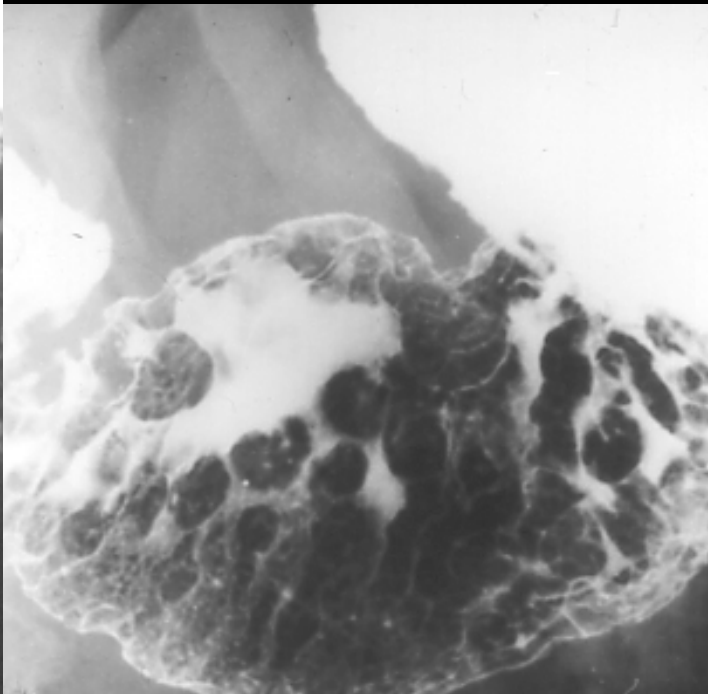
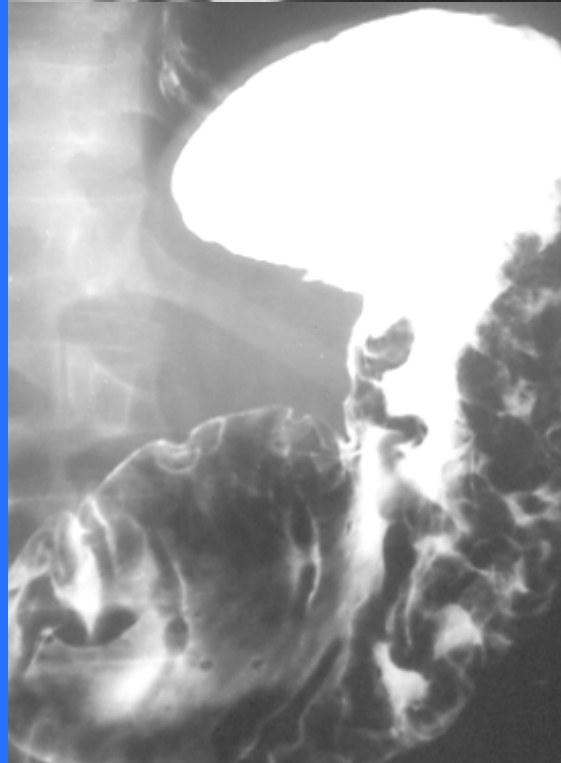
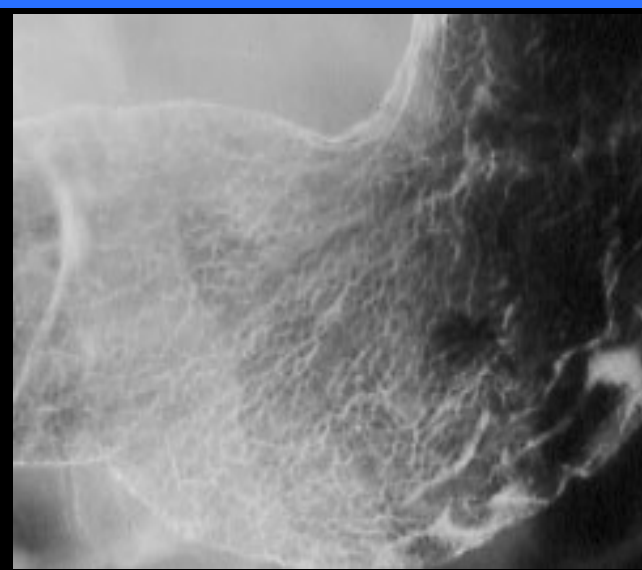
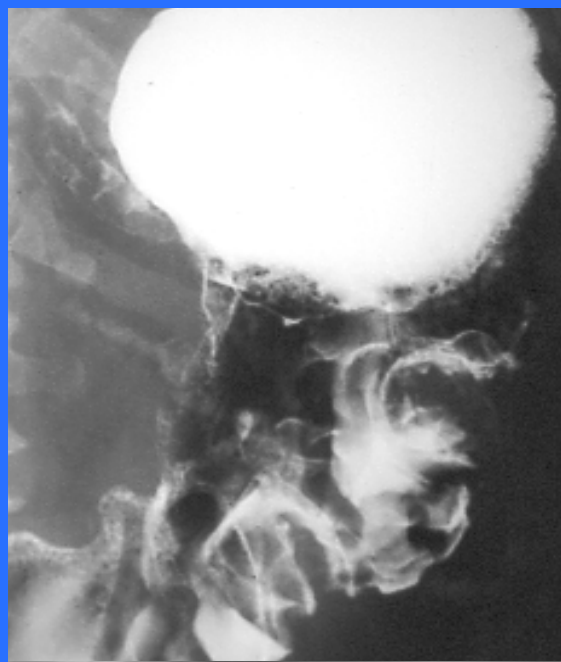
- Spazio retrogastrico



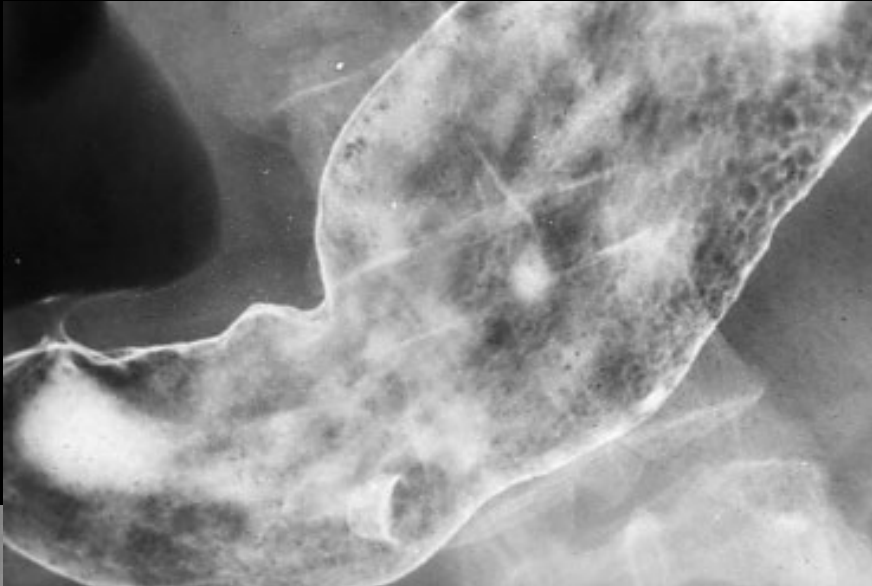
Stomaco **pliche**



Stomaco
areole

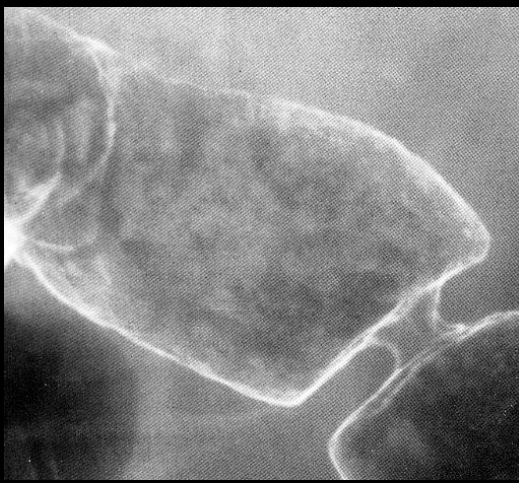
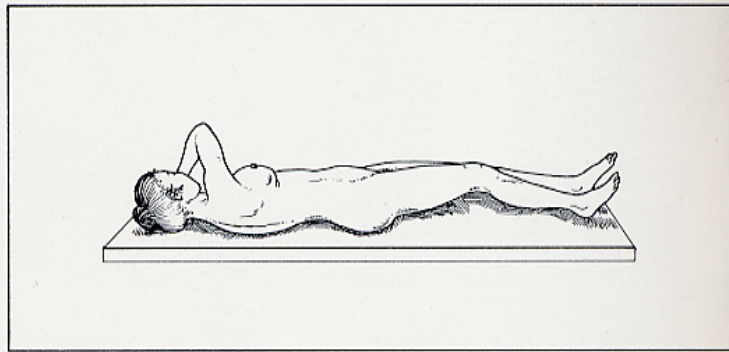
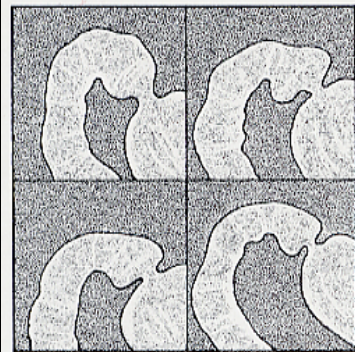
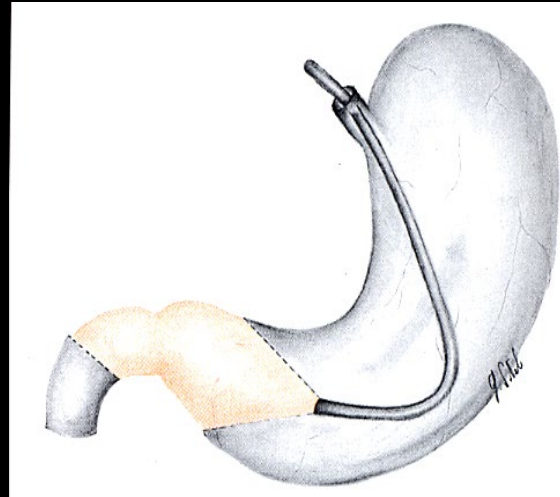


Stomaco **elasticità**



Ansa duodenale

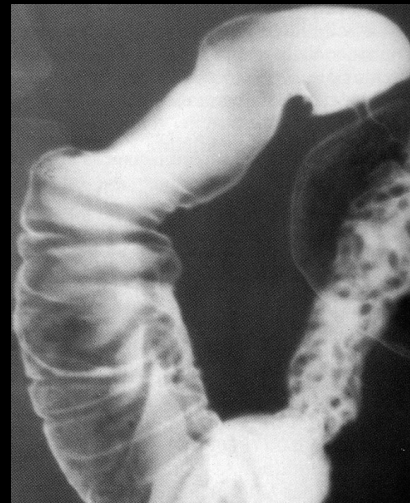
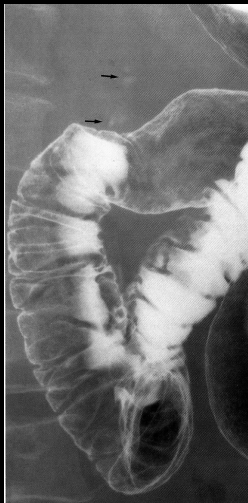
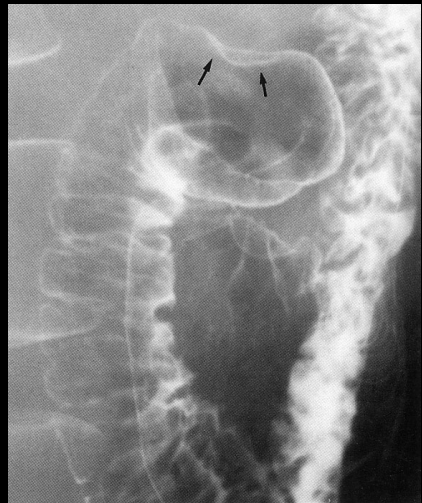
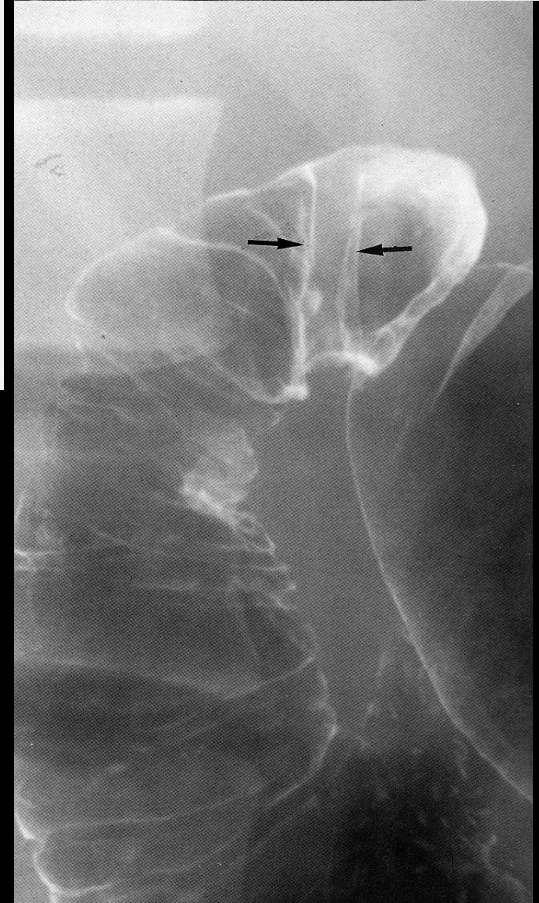
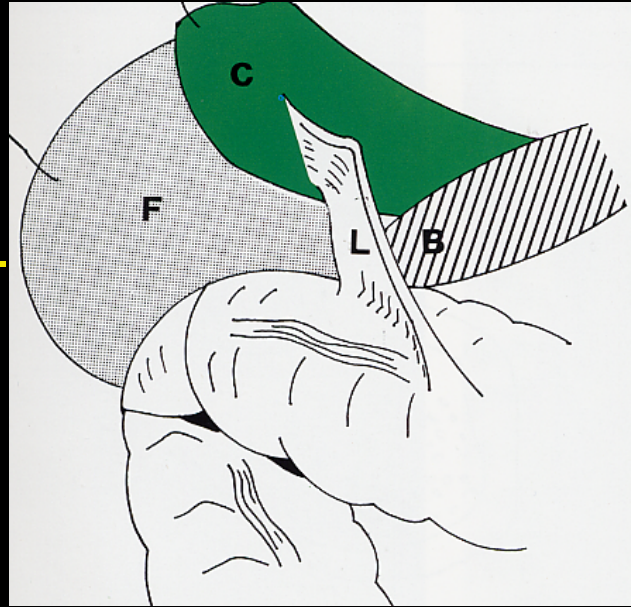
- Antro gastrico
- Piloro
- Bulbo duodenale



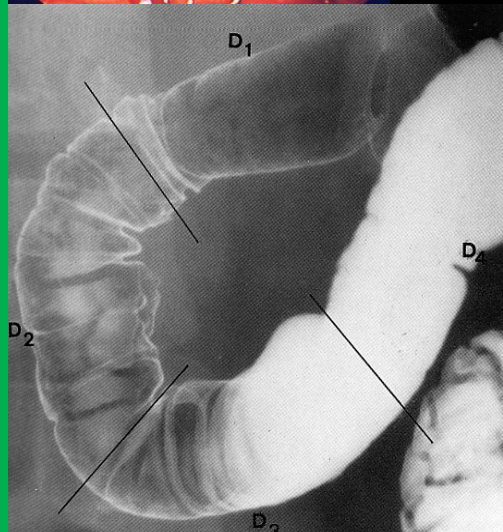
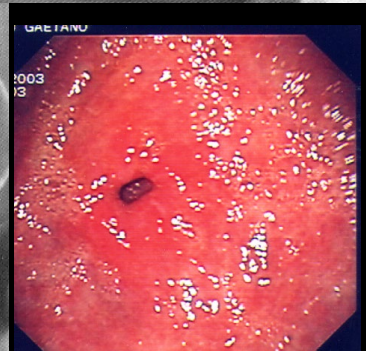
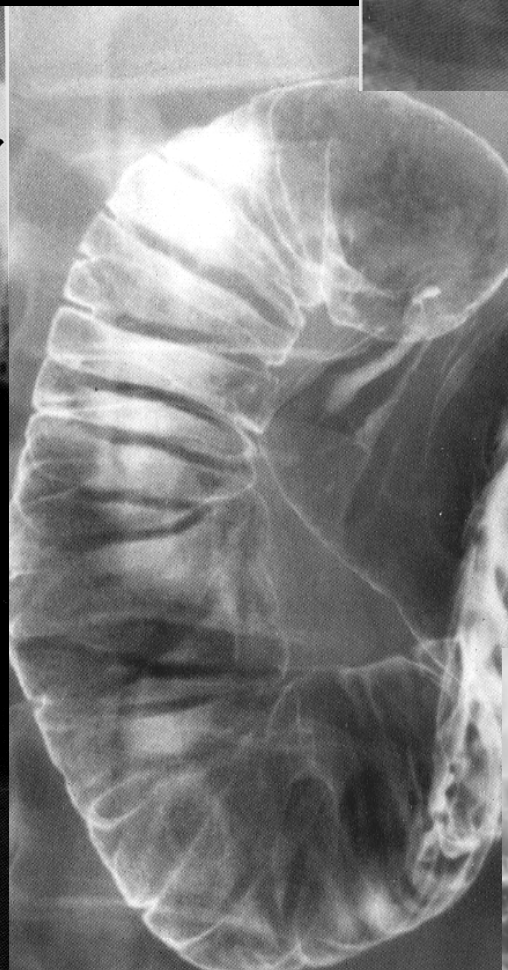
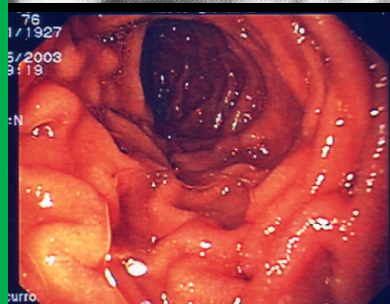
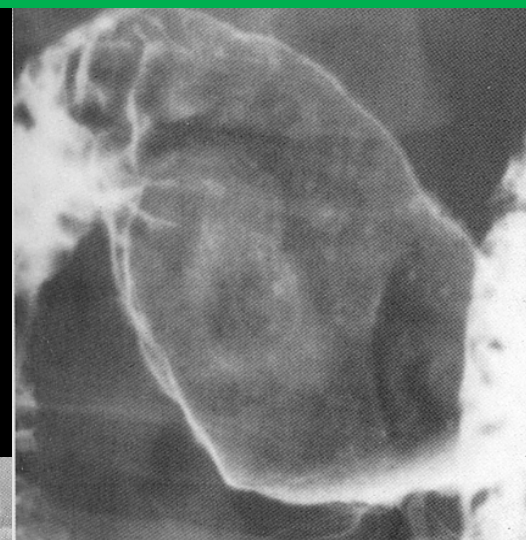
Ansa duodenale

Colecisti
Coledoco

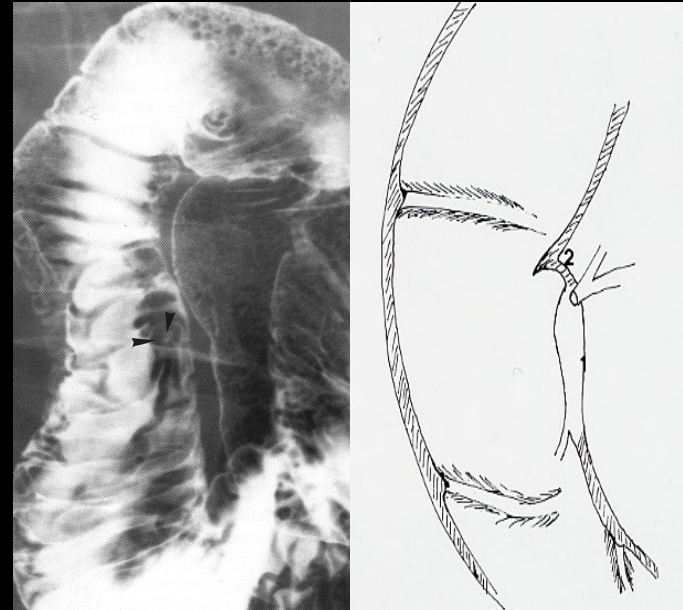
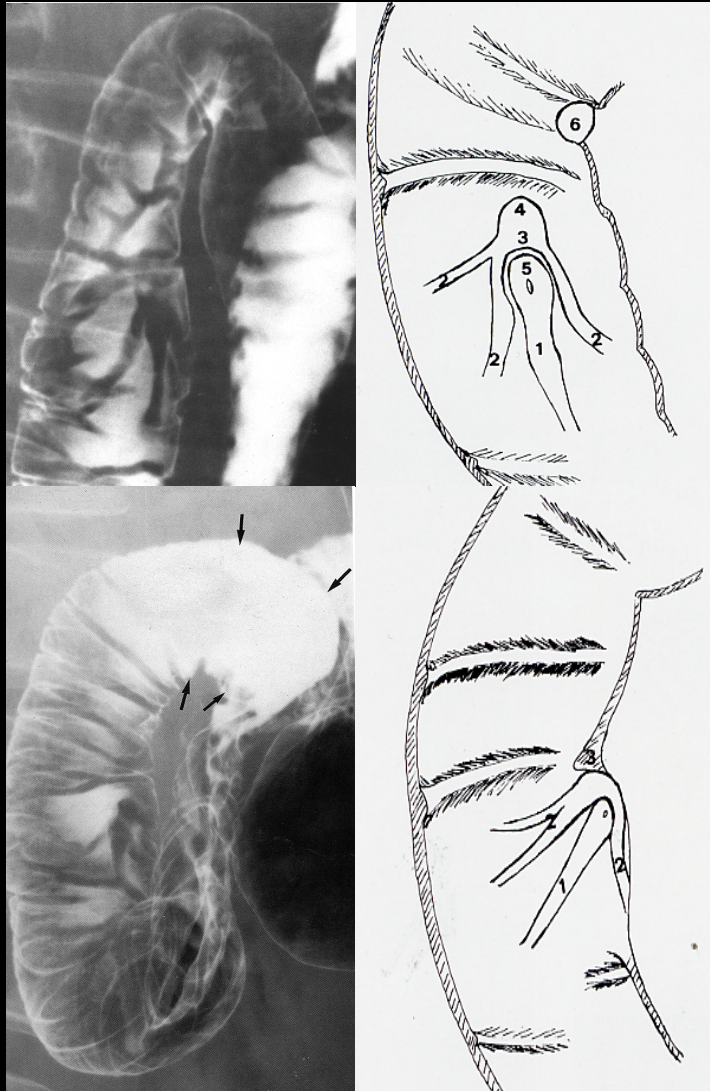
Ligamento colecisto-
duodeno-epiploico



Ansa duodenale



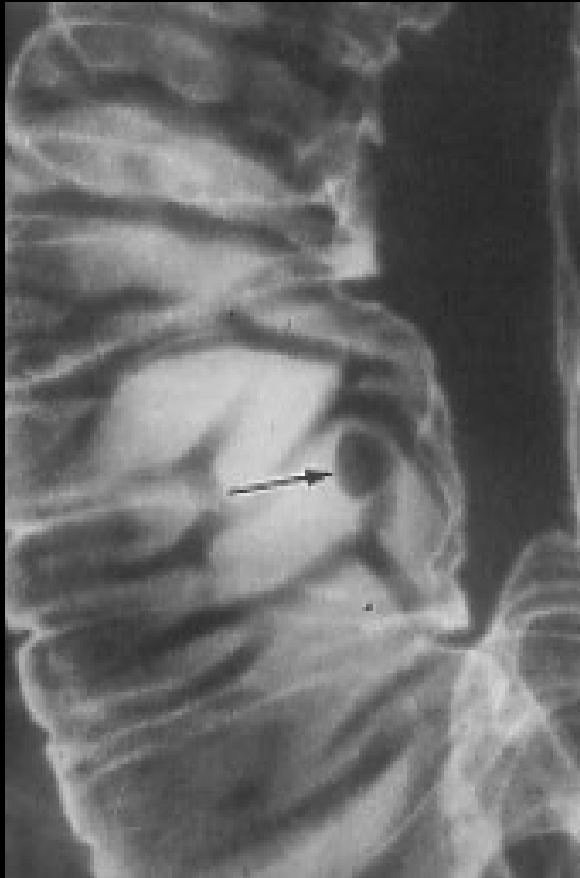
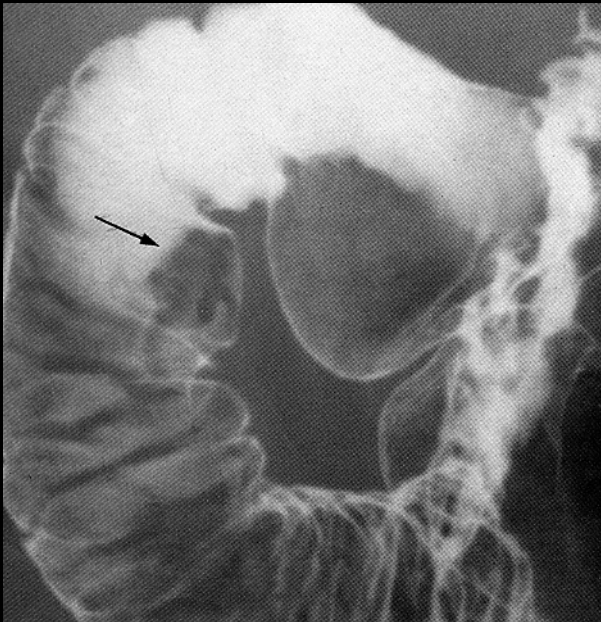
Ansa duodenale



1. Plica longitudinale
2. Pliche oblique
3. Cappuccio
4. Plica longitudinale superiore
5. Tubercolo
6. Papilla minor

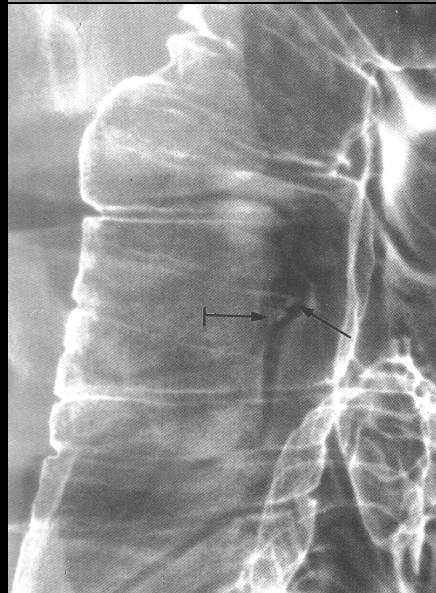
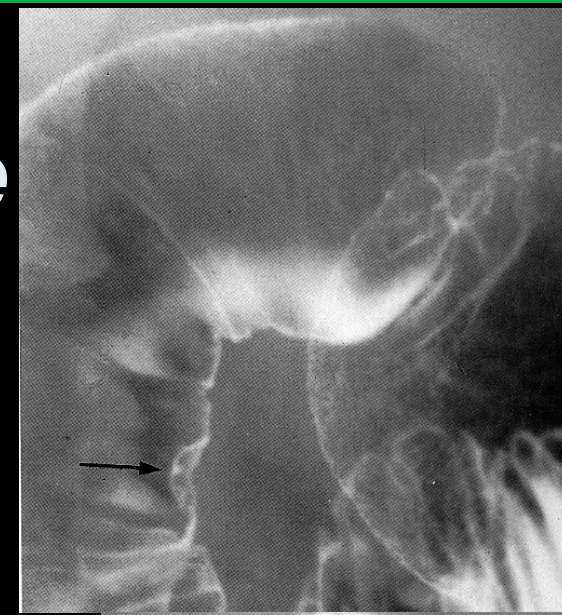
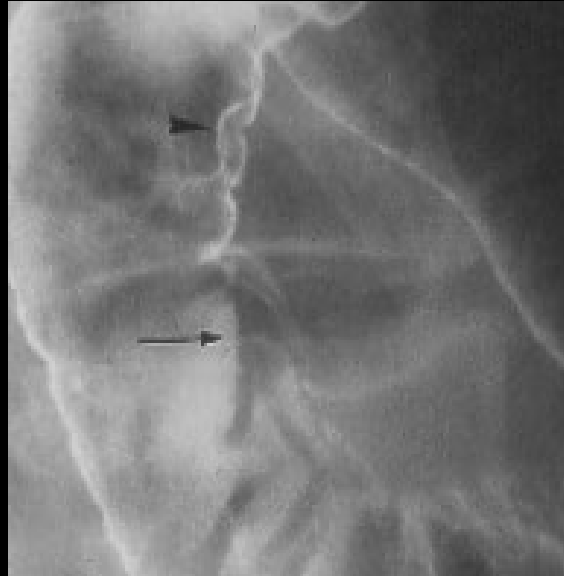
Ansa duodenale

- **Tubercolo della papilla**



Ansa duodenale

- **Sbocco coledoco e Wirsung**
- **Papilla minor**
- **Papilla maior**



Ansa duodenale

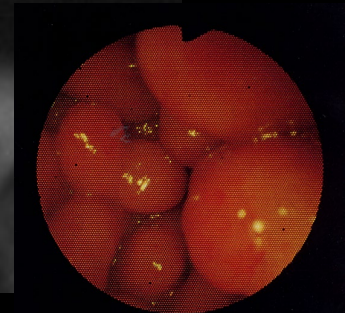


- **Eterotopia di mucosa gastrica (EMG)**
- **Malattia celiaca**



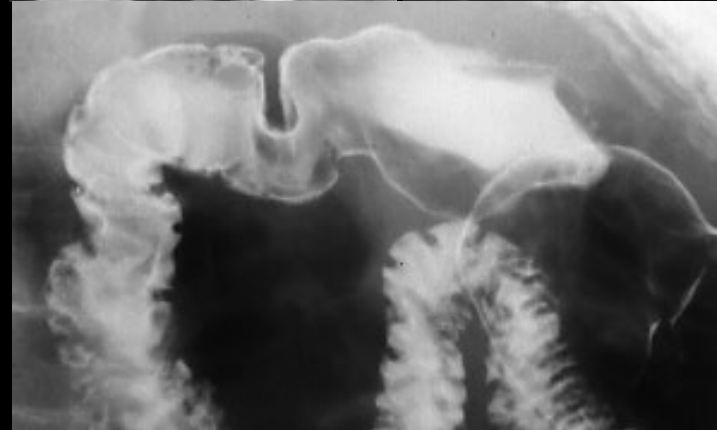
Ansa duodenale

- **GHIANDOLE DI BRUNNER**



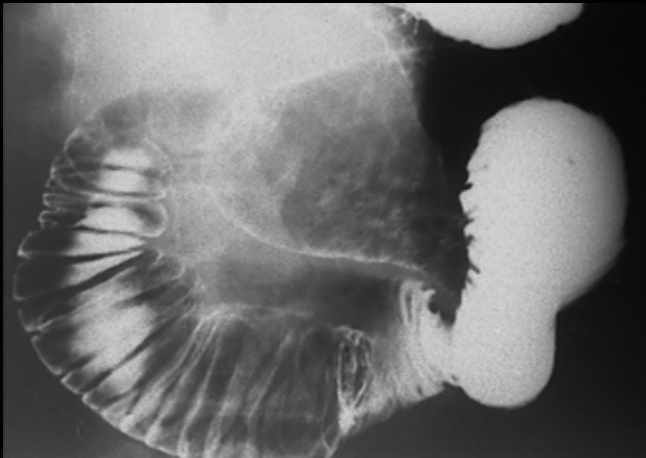
Ansa duodenale

- **DUODENO A "V" (D3 e D4 unite)**
- **DUODENO A "U" (D4 allungata)**
- **DUODENO FESTONATO**
- **DUODENO INVERSO**
- **DUODENO LIBERO**
- **MESENTERIUM COMUNE**

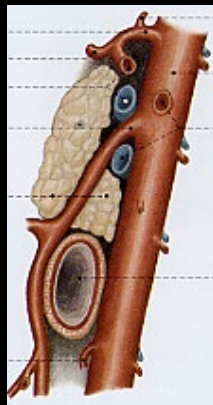
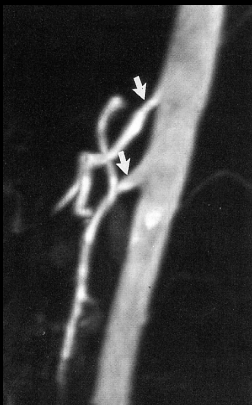
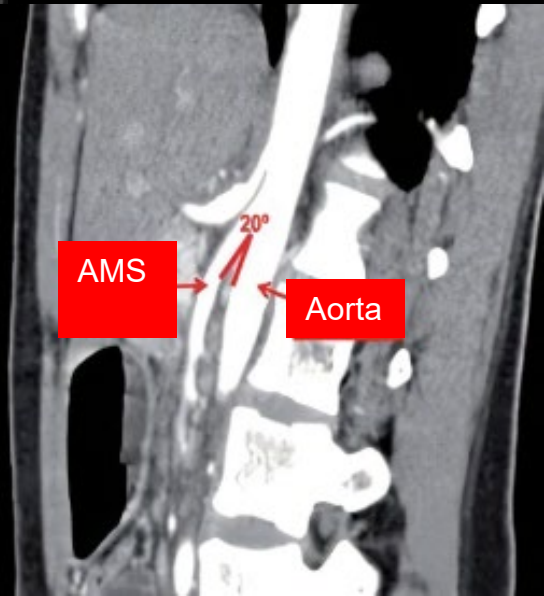
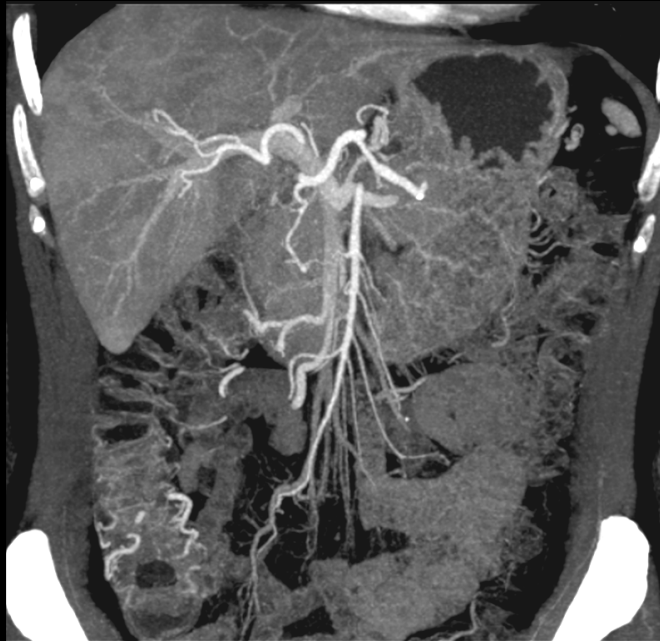


Ansa duodenale

- Compasso aorto-mesenterico
- Banda di Ladd



Ansa duodenale



Quali informazioni dal radiologo?

- 1. Dimensioni dello stomaco:
 - dimensioni e la forma dello stomaco
 -
- 2. Anatomia gastrica:
 - posizione ed anatomia strutture circostanti, come duodeno e l'esofago
- 3. Presenza di patologie:
 - eventuali anomalie o mal posizioni
- 4. Volume gastrico:
 - determinazione quantità di stomaco da rimuovere
- 5. Valutazione della funzionalità:
 - valutazione motilità esofagea e gastrica

Queste informazioni aiutano il chirurgo a pianificare l'intervento in modo sicuro ed efficace, minimizzando i rischi per il paziente